



THE COMMONWEALTH OF THE BAHAMAS

National Commission for Persons with Disabilities

Building Accessibility Requirements

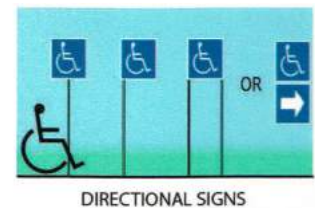


A

DIRECTIONAL & INFORMATIONAL SIGNS

LOCATION

- Signs that provide direction to or information about interior spaces and facilities of the site must comply with Visual Character requirements.
- Information about interior spaces and facilities includes rules of conduct, occupant load and similar signs.
- Signs providing direction to rooms or spaces include those that identify egress routes.
- Where not all entrances comply with are accessible, requirements accessible entrances must be identified by the International Symbol of Accessibility.
- Directional signs that indicate the location of the nearest accessible entrance must be provided at the entrances that are not accessible.
- Where a directional sign is required, this could mean locating a sign at the beginning of a route, not just at the inaccessible entrances to a building.



B

STAIRWAYS

STAIRS AND STAIRWAYS

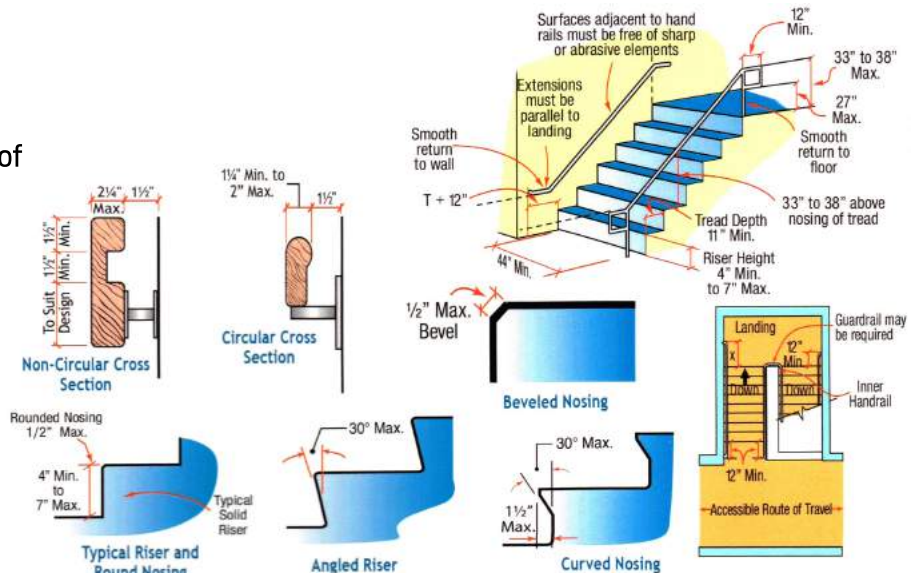
- Interior and exterior stairs that are part of a means of egress must comply with the requirements of this section.
- Although these requirements do not mandate handrails on stairs that are not part of a means of egress, local building codes may require handrails or guards.

TREADS AND RISERS

- All steps on a flight of stairs must have uniform riser heights and uniform tread depths.
- Risers Height: 4" min. and 7" max.
- Treads Depth: 11" min.
- Open risers are not permitted.
- Tread Surface must be stable, firm and slip resistant.

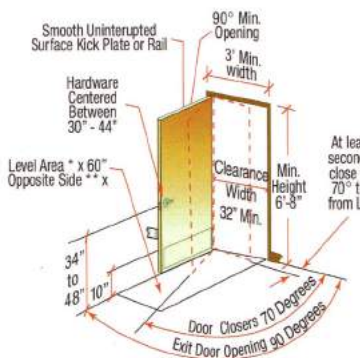
TREAD SURFACE

- Stair treads must be stable, firm and slip resistant.
- Changes in level are not permitted.
- Consider providing visual contrast on tread nosings, or at the leading edges of treads without nosings, so that stair treads are more visible for people with low vision.

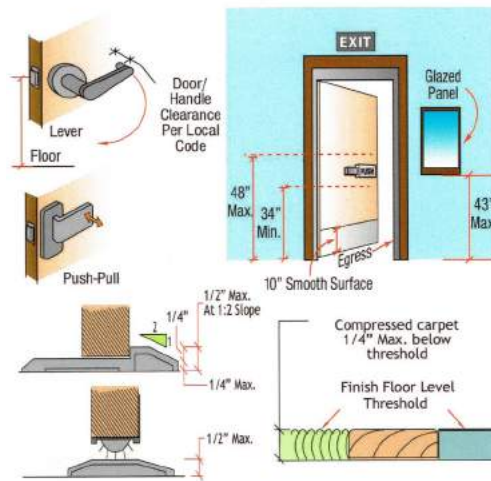


NOSINGS

- The radius of curvature at the leading edge of the tread must be 1/2" max.
- Nosings that project beyond risers must have the under side of the leading edge curved or beveled.
- Risers must be permitted to slope under the tread at an angle of 30° max. from vertical.
- The permitted projection of the nosing must extend 1 1/2" max. over the tread below.



* Door width + 18" for interior door or 24" for exterior door
** Door width + 12" if both latch and closer



MANUAL DOORS, DOORWAYS AND GATES

- Doors, doorways and gates that are part of an accessible route must be accessible.

CLEAR WIDTH

- Clear width of door openings: 32" min.
- Clear width of door openings greater than 24" deep: 36" min.
- Clear openings of doorways with swinging door must be measured between the face of the door and the stop, with the door open 90°.
- There must be no projections into the required clear opening width lower than 34" above the finish floor or ground.
- Projections into the clear opening width between 34" and 80" above the finish floor or ground must not exceed 4".

MANEUVERING CLEARANCES

- Maneuvering clearances must extend the full width of the door-way and the required latch side or hinge side clearance.
- Maneuvering clearances for swinging doors and gates: see Table 1.
- Maneuvering clearances for doorways less than 36" wide without doors or gates, sliding doors or folding doors: see Table 2
- Maneuvering clearances for recessed doors and gates: Maneuvering clearances for forward approach must be provided when any obstruction within 18" of the latch side of a doorway projects more than 8" beyond the face of the door, measured perpendicular to the face of the door or gate.

THRESHOLDS

- Thresholds, if provided at doorways, must be 1/2" high max.
- Raised thresholds and changes in level at doorways:
- Changes in level of 1/4" high max. must be permitted to be vertical.
- Changes in level between 1/4" high min. and 1/2" high max. must be beveled with a slope not steeper than 1:2.
- Changes in level greater than 1/2" high must be ramped.

DOOR AND GATES IN SERIES

- The distance between two hinged or pivoted doors in series and gates in series must be 48" min. plus the width of doors or gates swinging into the space.

DOOR AND GATES HARDWARE

- Operation: Handles, pulls, latches, locks or other operable parts on doors and gates must be operable with one hands and must not require tight grasping, pinching or twisting of the wrist.
- Operation force: 5 lbs. Max.
- Operable parts hardware height: 34" min. and 48" max. above the finish floor or ground.
- Where sliding doors are in the fully open position, operating hardware must be exposed and usable from both sides.

CLOSING SPEED

- Door closes and gate closers must be adjusted so that from an open position of 90°, the time required to move the door to a position of 12° from the latch is 5 seconds min.
- Door and gate spring hinges must be adjusted so that from the open position of 70°, the door or gate must move to the closed position in 1.5 seconds min.

DOOR AND GATE OPENING FORCE

- Interior hinged doors and gates: 8.5lbs. Max.
- Sliding or folding doors: 5 lbs. Max.
- Fire doors must have a minimum opening force allowable by the appropriate administrative authority.
- These forces do not apply to the force required to retract latch bolts or disengage other devices that hold the door or gate in a closed position.

DOOR AND GATE SURFACES

- Swinging door and gate surfaces within 10" of the finish floor or ground measured vertically must have a smooth surface on the push side extending the full width of the door or gate.
- Parts creating horizontal or vertical joints in these surfaces must be within 1/16" of the same plane as the other.
- Cavities created by added kick plates must be capped.

Type of Use		Minimum Maneuvering	
Approach Direction	Door or Gate Side		Parallel to Doorway (beyond latch side)
From front	Pull	60 inches	18 inches
From front	Push	48 inches	0 inches ¹
From hinge side	Pull	60 inches	36 inches
From hinge side	Pull	54 inches	42 inches
From hinge side	Push	42 inches ²	22 inches ³
From latch side	Pull	48 inches	24 inches
From latch side	Push	42 inches ⁴	24 inches

*ADA Table 404.2.4.1

¹ Add 12" if closer and latch are provided.

² Add 6" if closer and latch are provided.

³ Beyond hinge side

⁴ Add 6" if closer is provided.

Approach	Minimum Maneuvering Clearance	
Approach Direction	Perpendicular to Doorway	Parallel to Doorway (beyond stop/latch side unless noted)
From front	48 inches	0 inches
From side ¹	42 inches	0 inches
From pocket/hinge side	42 inches	22 inches ²
From stop/latch side	42 inches	24 inches

*ADA Table 404.2.4.2
¹Doorway with no door only.
²Beyond pocket/hinge side.

*ADA Table 404.2.4.1

¹ Add 12" if closer and latch are provided.

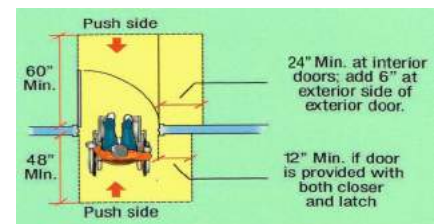
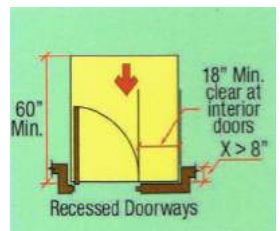
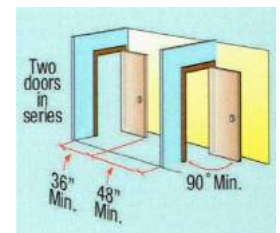
² Add 6" if closer and latch are provided.

³ Beyond hinge side.

⁴ Add 6" if closer is provided.

VISION LIGHTS

- Doors, gates and side lights adjacent to doors or gates, containing one or more glazing panels that permit viewing through the panels must have the bottom of at least one glazed panel located 43" max. above the finish floor.



D RAMPS

- Ramps on accessible routes must comply with the requirements of this section.
A walking surface that has a running slope steeper than 1:20 (5%) is considered a ramp.

SLOPE

- Stair treads must be stable, firm and slip resistant.

CROSS SLOPE

- Cross slope of ramp runs must not be steeper than 1:48.

FLOOR OR GROUND SURFACES

- Floor or ground surfaces of ramp runs must be stable, firm and slip resistant.
- Changes in level other than the running slope and cross slope are not permitted on ramp runs.

CLEAR WIDTH

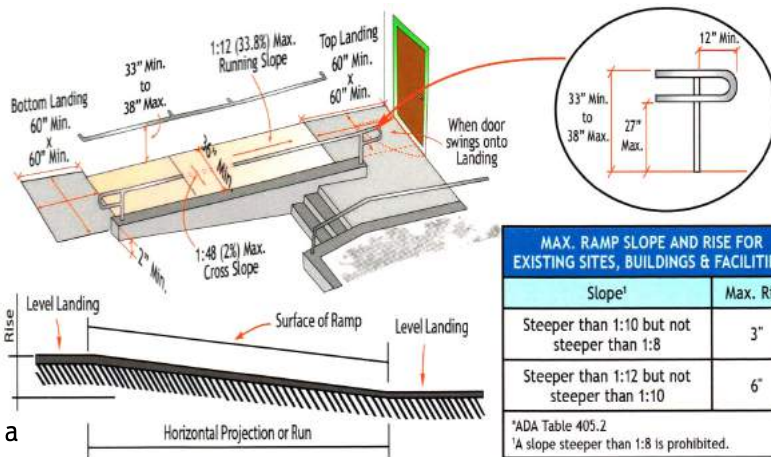
- The clear width of a ramp run and, where handrails are provided, the clear width between handrails must be 36" min.

RISE

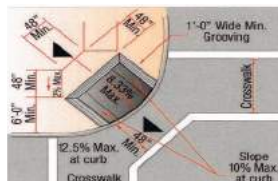
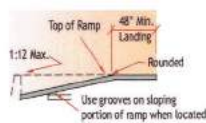
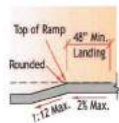
- The rise for any ramp run must be 30" max.

LANDINGS

- Ramps must have landings at the top and the bottom of each ramp run.
- Landings must be stable, firm and slip resistant.
- Changes in level are not permitted.
- The landing clear width must be at least as wide as the widest ramp run leading to the landing.
- Ramps that change direction between runs at landings must have a clear landing 60" min. x 60" min.
- Where doorways are located adjacent to a ramp landing, maneuvering clearances are permitted to overlap the required landing area.



E CURB RAMPS



CURB RAMPS

- Curb ramps on accessible routes must comply the requirements of this section.

COUNTER SLOPE

- Counter slopes of adjoining gutters and road surfaces immediately adjacent to the curb ramp must not be steeper than 1:20.
- The adjacent surfaces at transitions at curb ramps to walks, gutters and streets must be at the same level.

SIDES OF CURB RAMPS

- Where provided, curb ramp flares must not be steeper than 1:10.

LANDINGS

- Landings must be provided at the tops of curb ramps.
- The landing clear length must be 36" min.
- The landing clear width must be at least as wide as the curb ramp, excluding any flared sides, or the blended transition leading to the landing.

LOCATION

- Curb ramps and the flared sides of curb ramps must be located so that they do not project into vehicular traffic lanes, parking spaces, or parking access aisles.
- Curb ramps at marked crossing must be wholly contained within the marking, excluding any flared sides.

DIAGONAL CURB RAMPS

- Diagonal or corner type curb ramps with returned curbs or other well-defined edges must have the edges parallel to the direction of pedestrian flow.
- Diagonal curb ramps with flared sides must have a segment of curb 24" long minimum located on each side of the curb ramp and within the marked crossing.
- The bottom of diagonal curb ramps must have a clear space 48" min. clear space within the markings.

ISLANDS

- Raised islands I crossings must be cut through level with the street or have curb ramps at both sides.
- Each curb ramp must have a level area 48" long min. x 36" wide min. at the top of the curb ramp in the part of the island interested by the crossings.
- Each 48" min. x 36" min. Area must be oriented so that the 48" min. length is in the direction of the running slope of the curb ramp it serves.
- The 48" min. x 36" min. areas and the accessible route must be permitted to overlap.

SLOPE

- Ramp runs must have a running slope not steeper than 1:12
- To accommodate the widest range of users, provide ramps with the least possible running slope and, where possible, accompany ramps with stairs for use by those individuals for whom distance presents a greater barrier than steps, e.g., people with heart disease or limited stamina.

CROSS SLOPE

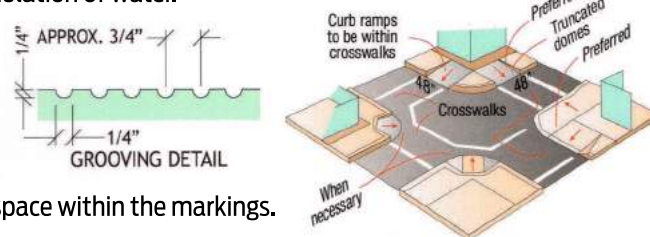
- Cross slope of ramp runs must not be steeper than 1:48
- Cross slope is the slope of the surface perpendicular to the direction of travel.
- Cross slope is measured the same way as slope is measured (i.e., the rise over the run).

CLEAR WIDTH

- The clear width of a ramp runs must be stable, firm and slip resistant.
- Changes in level other than the running slope and cross slope are not permitted on ramp runs.

WET CONDITIONS

- Landings subject to wet conditions must be designed to prevent the accumulation of water.



F WALKING SURFACES

FLOOR OR GROUND SURFACE

- Floor or ground surfaces must be stable, firm and slip resistant.

SLOPE

- The running slope of walking surfaces must not be steeper than 1:20.
- The cross slope of walking surfaces must not be steeper than 1:48.

CHANGES IN LEVEL

- Changes in level of ¼" high max. are permitted to be vertical.
- Changes in level between ¼" high min. and ½" high must be beveled with a slope not steeper than 1:2.
- Changes in level greater than ½" high must be ramped.

CLEAR WIDTH

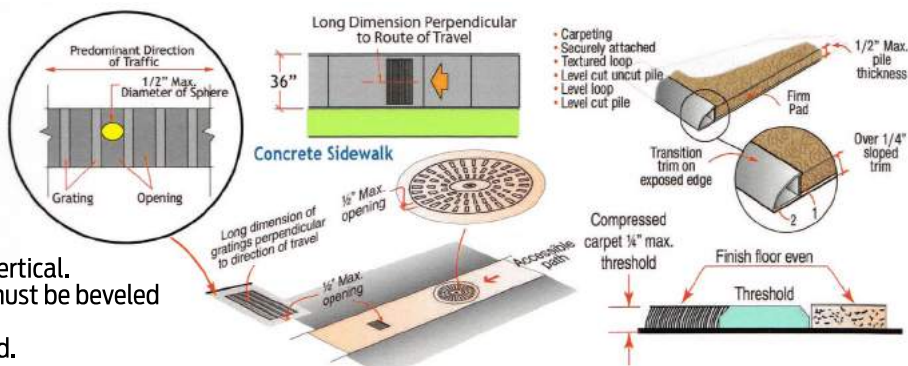
- Clear width of walking surfaces: 36" min.
- The clear width must be permitted to be reduced to 32" min. for a length of 24" max. provided that reduced width segments are separated by segments that are 48" long min. and 36" wide min.

CLEAR WIDTH AT TURN

- Where the accessible route makes a 180° turn around an element which is less than 48" wide, clear width must be 42" min. approaching the turn, 48" min. at the turn and 42" min. leaving the turn.

PASSING SPACES

- An accessible route with a clear width less than 60" must provide passing spaces at intervals of 200' max. width must be 42" min. approaching turn, 48" min. at the turn and 42" min. leaving the turn.
- Passing spaces must be either: a space 60" min x 60" min.; or, an intersection of two walking surfaces providing a T-shaped space where the base and arms of the T-shaped space extend 48" min. beyond the intersection.



CARPET

- Carpet or carpet tile must be securely attached and must have a firm cushion, pad, or backing or on cushion or pad.
- Carpet or carpet tile must have a level loop, textured loop, level cut pile, or level cut/uncut pile texture.
- Pile height must be ½" max.
- Exposed edges of carpet must be fastened to floor surfaces and must trim on the entire length of the exposed edge.
- Carpet edge trim must comply with changes of level requirements.

G WATER CLOSETS & TOILET COMPARTMENTS

LOCATION

- Wall or Partition: The water closet must be positioned with a wall or partition to the rear and to one side.
- Centerline of Water Closet: 16" Min. to 18" Max. from the side wall or partition.
- Arrangement: For left-hand or right hand approach.

CLEARANCE

- Clearance Around Water Closet: 68" min. measured perpendicular from the side wall and 72" min. measured perpendicular from the rear wall.

OVERLAP

- The required clearance around the water closet must be permitted to overlap the water closet, associated grab bars, dispensers, sanitary napkin disposal units, coat hooks, shelves, accessible routes, clear floor coat hooks, shelves, accessible routes, clear floor space and clearances required at other fixtures and the turning space. No other fixtures or obstructions must be located within the required water closet clearance.

SEATS

- Seat Installation Height: 19" min. and 20" max., measured from floor surface to top of seat.
- Seats must not be sprung to return to a lifted position.

GRAB BARS

- Grab bars must be provided on the side wall closest to the water closet and on the rear wall.
- Where separate grab bars are required on adjacent walls at a common mounting height, an L-Shaped grab bar meeting the dimensional requirements must be permitted.

FLUSH CONTROLS

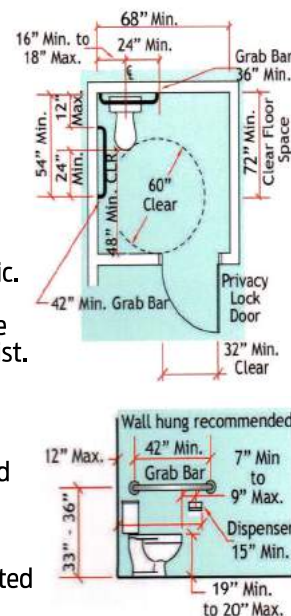
- Location: open side of the water closet.
- Installation Height: 44" max. above the finish floor.
- Controls must be hand operated or automatic.
- Hand operated flush controls must be operable with one hand and must not require tight grasping, pinching or twisting of the wrist.
- Operation Force: 5 lbs. Max.

DISPENSERS

- Toilet paper dispensers must be 7" min. and 9" max. in front of the water closet measured to the centerline of the dispenser.
- The outlet of the dispenser height: 15" min. and 48" max. above the finish floor.
- The outlet of the dispenser must not be located behind grab bars.
- Dispensers must allow continuous paper flow.

DOORS

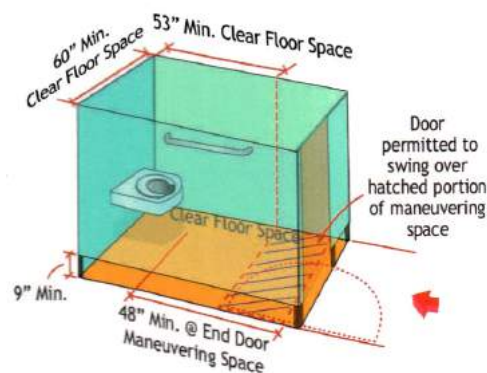
- Doors must be located in the front partition or in the side wall or partition farthest from the water closet.
- Where located in the front partition, the door opening must be 4" max. from the side wall or partition farthest from the water closet.
- Where located in the side wall or partition, the door opening must be 4" max. from the front partition.
- The door must be self-closing.
- A door pull must be placed on both sides of the door near the latch.
- Toilet compartment doors must not swing into the minimum required compartment area.
- Handles, pulls, latches, locks and other operable parts on doors and gates must be 34" min. and 48" max. above the finish floor or ground.



H WHEELCHAIR ACCESSIBLE COMPARTMENT

COMPARTMENT CLEARANCE

- Clearance around a water closet must be 60" min. measured perpendicular from the side wall and 56" min. measured perpendicular from the rear wall.
- Wheelchair accessible compartments must be 60" wide min. measured perpendicular to the side wall, and 53" deep min. for wall hung water closets and 72" deep min. for floor mounted water closets measured perpendicular to the rear wall.
- The required clearance around the water closet must be permitted to overlap the water closet, associated grab bars, dispensers, sanitary napkin disposal units, coat hooks, shelves, accessible routes, clear floor space and clearances required at other fixtures, and the turning space.
- No other fixtures or obstructions must be located within the required water closet clearance.



APPROACH

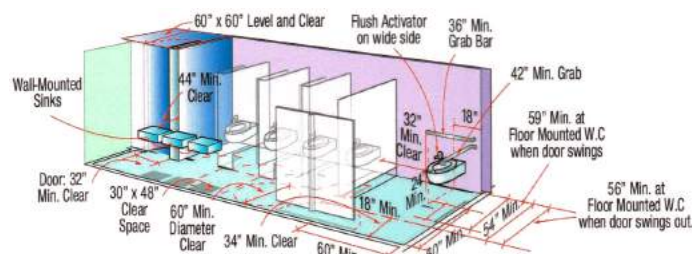
- No other fixtures or obstructions must be located within the required water closet clearance. Compartments must be arranged for left-hand or right-hand approach to the water closet.

TOE CLEARANCE

- The front partition and at least one side partition must provide a toe clearance of 9" min. above the finish floor and 6" deep min. beyond the compartment-side face of the partition, exclusive of partition support members.

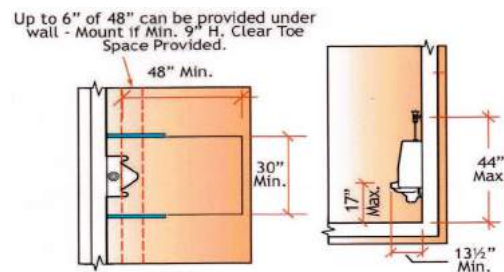
I MULTIPLE ACCOMMODATION TOILETS

Where multiple single user toilet rooms are clustered at a single location, 50%, but no fewer than 1, of the single user toilet rooms for each use at each cluster must comply with the accessible toilet requirements of this Quick-Card.

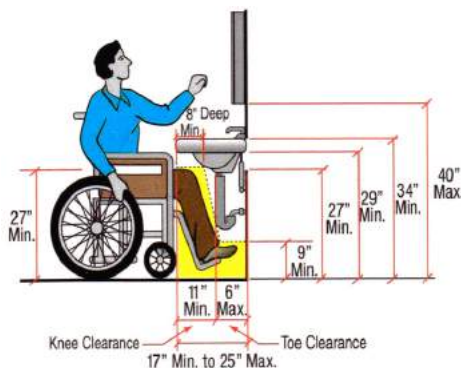


J URINALS

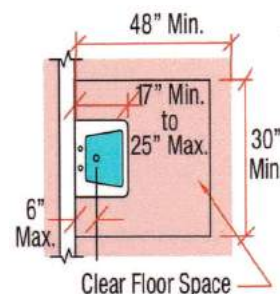
- Urinal Types: stall-type or the wall-hung type
- Urinal Height: 17" max. above the finish floor or ground to the rim of the urinal.
- Urinal Depth: 13 1/2" deep min. measured from the outer face of the urinal rim to the back of the fixture.
- Clear Floor Space: 30" min. x 48" min., positioned for a forward approach.
- Flush Control Height: 44" Max. above the finish floor.
- Flush Control Type: Flush controls must be hand operated or automatic.
- Flush Controls: must be operable with one hand and not require tight grasping, pinching or twisting of the wrist.
- Flush Control Operation Force: 5lbs. Max. to activate operable parts.
- Sanitary Dispenser near Toilet Tissue Dispenser.
- Toilet Tissue Dispenser to side.



K LAVATORIES

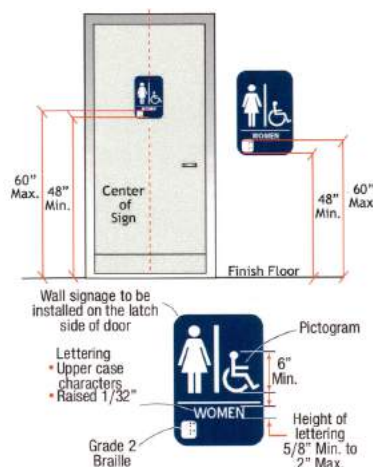


- Clear Floor Space: 30" Min x 48" Min.
- If a min. of 9" height of toe clearance is provided, a max. of 6" of the 48" clear floor space may extend into space.
- Horizontal Depth: 17" Min. to 25" Max.
- Lavatory Height: 34" Max.
- Faucets must be operable with one hand and must not require tight grasping, pinching or twisting of the wrist.
- The force required to activate operable parts must be 5 lbs. Max.
- Hand-Operated Metering Faucets Opening Duration: 10 secs. Min.
- Force to Operate Faucets: 5lbs. Max.
- Exposed Pipes and Surfaces: Water supply and drain pipes under lavatories must be insulated or otherwise configured to protect against contact.
- There must be no sharp or abrasive surfaces under lavatories.

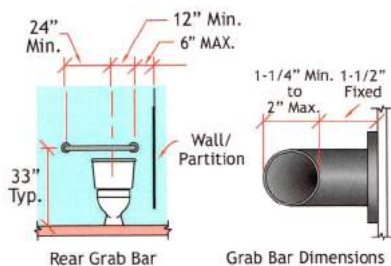


L RESTROOM SIGN LOCATION

- Tactile characters on signs must be located 48" min. above the finish floor or ground surface, measured from the baseline of the lowest tactile character and 60" max. above the finish floor or ground surface, measured from the baseline of the highest tactile character.
- Where a tactile sign is provided at a door, the sign must be located alongside the door at the latch side.
- Where a tactile sign is provided at double doors with one active leaf, the sign must be located on the inactive leaf.
- Where a tactile sign is provided at double doors with two active leaf, the sign must be located to the right of the right hand door.
- Where there is no wall space at the latch side of a single door or at the right side of double doors, signs must be located on the nearest adjacent wall.
- Signs containing tactile characters must be located so that a clear floor space of 18" min. x 18" min., centered on the tactile characters, is provided beyond the arc of any door swing between the closed position and 45° open position.



M GRAB BARS



SPACING

- Space between the wall and the grab bar: 1 1/2"
- Space between the grab bar and projecting objects below and at the ends: 1 1/2" min.
- Space between the grab bar and projecting objects above: 12" min.

POSITION OF GRAB BARS

- Installation Position: Horizontal
- Installation Height: 33" min. and 36" max. above the finish floor measured to the top of the gripping surface.
- Grab bars must be installed in any manner that provides a gripping surface and that does not obstruct the required clear floor space.

SURFACE, FITTINGS & STRUCTURAL STRENGTH

- Grab bars and any wall or other surfaces adjacent to grab bars must be free of sharp or abrasive elements and must have rounded edges.
- Grab bars must not rotate within their fittings.
- Structural Strength: 250 lbs.

CROSS SECTION

- Circular Cross Section Outside Diameter: 1 1/4" min. and 2" max.
- Non-Circular Cross Section Dimension: 2" max.
- Non-Circular Perimeter: 4" min. and 4.8" max.

N ACCESSORIES

MIRRORS

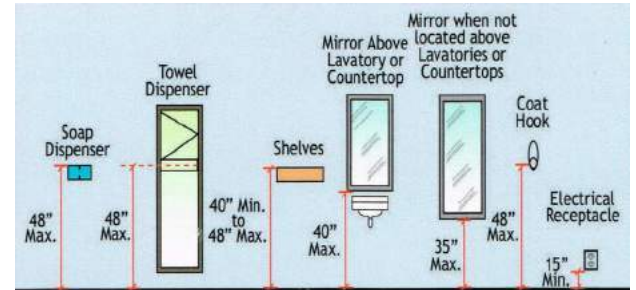
- Mirror Height – When Located Above Lavatories or Countertops: 40" max. above the finish floor or ground measured to the bottom edge of the reflecting surface.
- Mirrors Height – When Not Located Above Lavatories or Countertops: 35" max. above the finish floor or ground measured to the bottom edge of the reflecting surface.
- Mirror Height – Full-Length: 74" min. measured from the floor or ground to the top edge of mirror.

HOOKS, SHELVES & CABINETS

- Coat Hooks Height: 15" Min. and 48" Max.
- Shelves Height: 40" min. and 48" max. above the finish floor.

SOAP & TOWEL DISPENSERS

- Operable Parts Height: 48" Max. above the finish floor.
- Located soap towel dispensers so that they are conveniently usable by a person at the accessible lavatory.
- Electrical Receptacles: 15" Min. to 48" Max. above finish floor/ground.



O DRINKING FOUNTAINS

MINIMUM NUMBER

- No fewer than 2 drinking fountains must be provided.
- One drinking fountain must be wheelchair accessible and one drinking fountain must comply with the requirements of standing persons.
- Where more than the min. number of drinking fountains are provided, 50% of the total number of drinking fountains provided must be wheelchair accessible and 50% of the total number of drinking fountains provided must comply with the requirements for standing persons.

CLEAR FLOOR SPACE

- Clear Floor Space Size: 30" min. x 48" min.
- Clear Floor Space must be positioned for a forward approach and centered on the unit.
- Knee and toe clearances must be provided.

OPERABLE PARTS

- Operable parts: operable with one hand and must not require tight grasping, pinching or twisting of the wrist.
- Operable parts force: 5 lbs max.
- The flow of water must be activated by a manually operated system that is front mounted or side mounted and located within 1" of the front edge of the fountain or an automatic electronically controlled device.

SPOUT

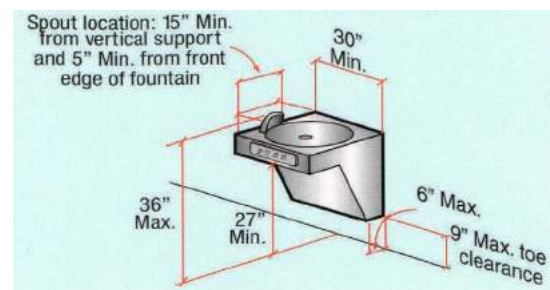
- Spout Outlets Installation Height: 36" max. above the finish floor or ground.
- Spout Location: 15" min. from the vertical support and 5" max. from the front edge of the unit, including bumpers.

WATER FLOW

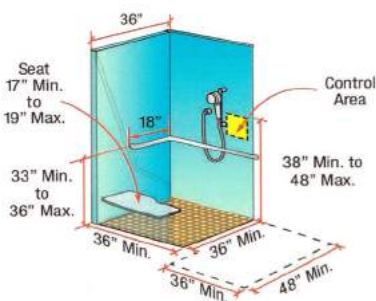
- Flow of Water Height: 4" min.
- Location: 5" max. from the front of the unit.
- Angle of the water stream: horizontal, relative to the front face of the unit.
- Where spouts are located less than 3" of the front of the unit, the angle of the water stream must be 30° max.
- Where spouts are located between 3" and 5" max. from the front of the unit, the angle of the water stream must be 15° max.

DRINKING FOUNTAINS FOR STANDING PERSONS

- Spout outlets of drinking fountains for standing persons: 38" min. and 43" max. above the finish floor or ground.



P SHOWERS



TRANSFER TYPE SHOWER COMPARTMENTS SIZE & CLEARANCES

- Clear Inside Dimensions: 36" x 36" (with a 36" Min. wide entry on the face of the shower compartment).
- Clear Floor Space Adjacent to Shower Compartment: 36" Min. x 48" Min.

GRAB BARS

- Grab bar provided across the control wall and back wall to a point of 18" from the control wall.
- Installation Height: 33" Min. to 36" Max.

SEATS

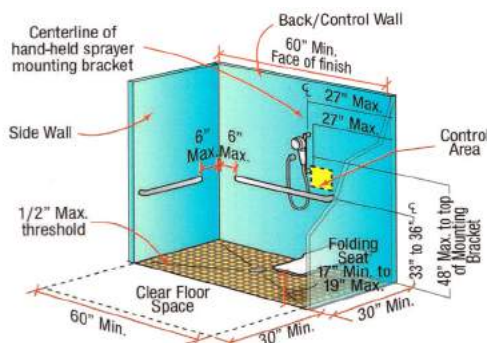
- Type: Folding or non-folding.
- Shape: Rectangular or L-Shaped.
- Structural Strength: 250 lbs.
- In transfer-type showers, the seat must extend from the back wall to a point within 3" of the compartment entry.
- The top of the seat must be 17" min. and 19" max. above the bathroom finish floor.

CONTROLS

- Location: Installed on the side wall opposite the seat, 15" Max. from the centerline of the seat toward the shower opening.
- Installation Height (above the shower floor): 38" Min. to 48" Max.

SHOWER SPRAY UNIT

- Shower spray unit hose length: 59" Min.
- Must be capable of being used as both a fixed-position shower head and as a hand-held shower.
- The shower spray unit must have an on/off control with a non-positive shut-off.
- If an adjustable-height shower head on a vertical bar is used, the bar must be installed so as not to obstruct the use of grab bars.
- Shower spray units must deliver water that is 120°F max.



STANDARD ROLL-IN SHOWER COMPARTMENT SIZE & CLEARANCES

- Clear Inside Dimensions: 30" Min. wide x 60" Min. long (with a 60" Min. wide entry on the face of the shower compartment).
- Clear Floor Space Adjacent to Shower Compartment: 30" Min. x 60" Min. (adjacent to the open face of the shower compartment).

GRAB BARS

- Location: Back wall and Side wall opposite the shower seat.
- Installation Clearance: Grab bars must be installed 6" max. from adjacent walls.
- Installation Height: 33" Min. to 36" Max.

SEATS

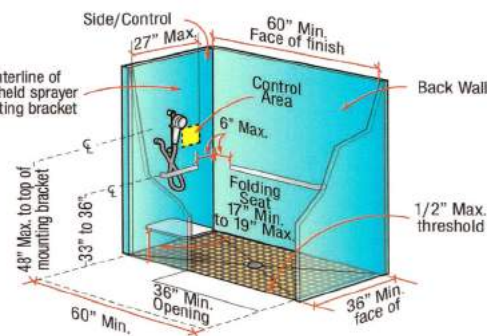
- Type: Folding.
- Shape: Rectangular or L-shaped.
- Structural Strength: 250 lbs.
- In a standard roll-in shower compartment, the seat must be installed on the side wall adjacent to the controls, and must extend from the back wall to a point within 3" of the compartment entry.
- The top of the seat must be 17" min. and 19" max. above the bathroom finish floor.

CONTROLS

- Location: above the grab bar, but no higher than 48" above the shower floor.
- Where a seat is provided, the controls, faucets and shower sprat unit must be installed on the back wall adjacent to the seat wall and must be located 27" max. from the seat wall.

SHOWER SPRAY UNIT

- See Shower Spray Unit requirements in Transfer Type Shower Compartments.

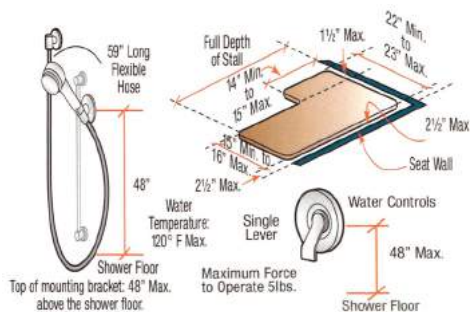


ALTERNATE ROLL-IN SHOWER COMPARTMENT SIZE & CLEARANCES

- Clear Inside Dimensions: 36" Min. wide x 60" Min. long (with a 36" Min. wide entry on the long side of the compartment).

GRAB BARS

- Location: back wall and the side wall farthest from the compartment entry.
- Installation Clearance: grab bars must be installed 6" max. from adjacent walls.
- Grab bars must not be provided above the seat.



For more information, please contact:

The National Commission for Persons with Disabilities

The Ministry of Social Services and Community Development

Aventura Plaza, JFK Drive and Bethel Avenue • PO Box N-3206, Nassau, The Bahamas

Email: DisabilitiesCommission@Bahamas.Gov.BS

Website: disabilitiescommissionbahamas.org